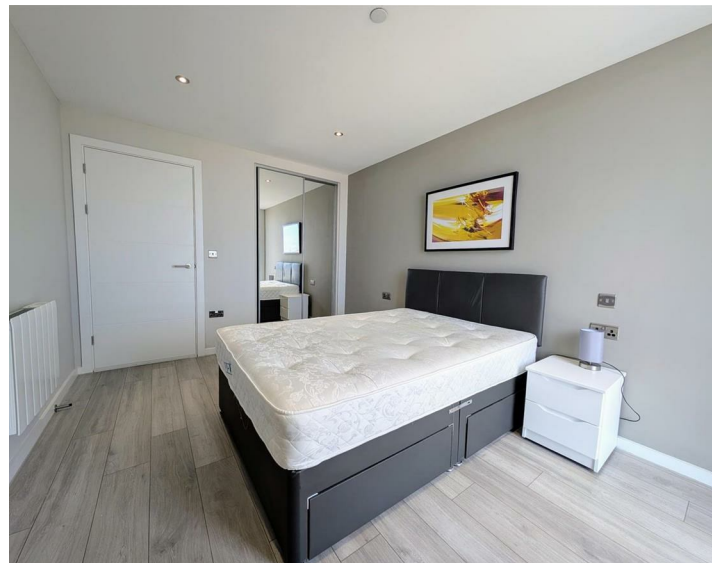




Apt 1208, 11, Park Central Jesse Hartley Way, Liverpool, L3  
£950 Per Month

www.  
cityresidential  
.co.uk



## About the Property

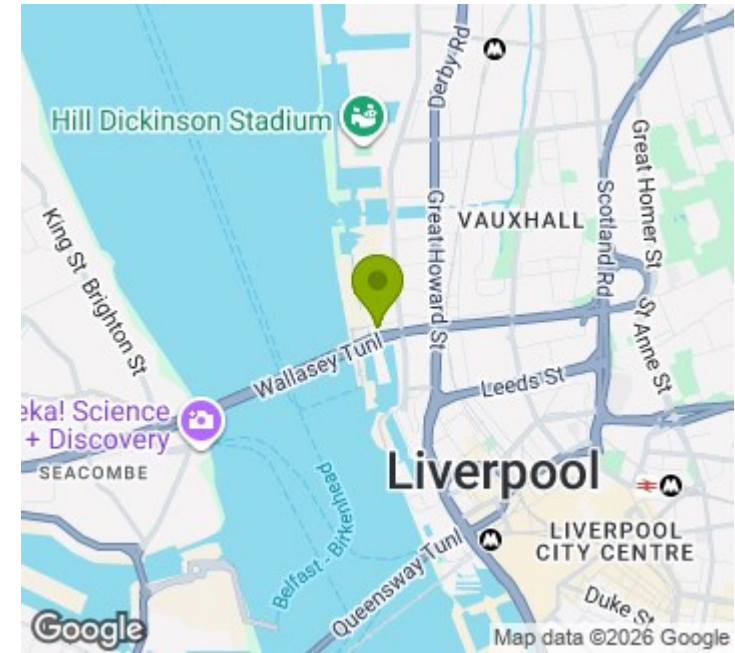
Move-In Ready!

City Residential are delighted to bring to the market this beautifully presented one-bedroom 12th floor apartment at Park Central, Jesse Hartley Way. Part of the exciting Liverpool Waters multi-million-pound regeneration project, the development sits along the city's famous and historic docklands.

The apartment is finished to a high standard and offers well-proportioned accommodation briefly comprising: entrance hall, spacious lounge/dining area, modern high-gloss fitted kitchen, double bedroom with fitted wardrobes, and a contemporary bathroom.

With strong demand expected, we recommend early viewing to avoid disappointment.

- Available Now!!
- Fully Furnished!!
- Great Location
- Communal Terrace
- Communal Study
- Deposit Payable £1096
- Council Tax Band - B
- EPC Rating -B
- No Parking



## Energy Efficiency Rating

|   | Current                    | Potential |
|---|----------------------------|-----------|
| Very energy efficient - lower running costs |                            |           |
| (92 plus) <b>A</b>                          |                            |           |
| (81-91) <b>B</b>                            | <b>83</b>                  | <b>83</b> |
| (69-80) <b>C</b>                            |                            |           |
| (55-68) <b>D</b>                            |                            |           |
| (39-54) <b>E</b>                            |                            |           |
| (21-38) <b>F</b>                            |                            |           |
| (1-20) <b>G</b>                             |                            |           |
| Not energy efficient - higher running costs |                            |           |
| <b>England &amp; Wales</b>                  | EU Directive<br>2002/91/EC |           |



City Residential  
 81/87 Victoria Street, The Old Haymarket, Liverpool L1 6DG  
 T: 0151 231 6100 F: 0151 231 6105  
 E: sales@cityresidential.co.uk



WWW.  
**cityresidential**  
 .co.uk